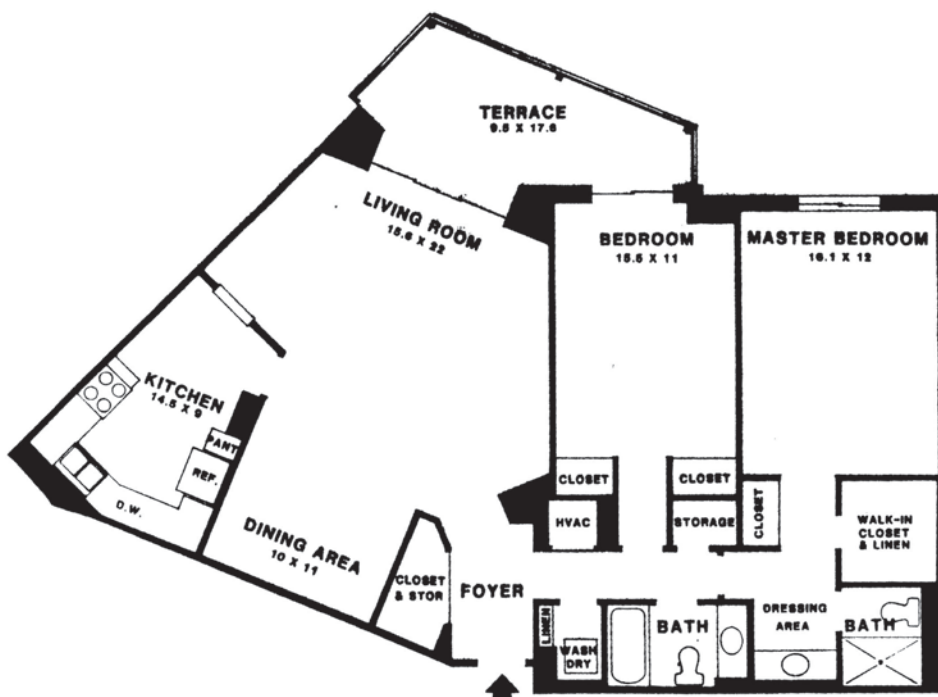




# “J” Model

15115 Interlachen Drive, Unit 803, Silver Spring, MD 20906



- Enjoy the spectacular view from the 8<sup>th</sup> floor
- Underground garage space (# 3-85)
- 2 bedrooms and 2 full baths
- Table space kitchen with pass through
- Mirrored dining area reflects the light and the view throughout the living area
- Master bedroom with dressing area and vanity
- Bedroom #2 and spacious living room open to enclosed balcony
- 1,317 square feet
- Condo fee: \$638/monthly
- Estimated property tax and non-tax charges in the first full fiscal year of ownership is \$1,836



**Stan Moffson**

Authorized Leisure World® Specialist

**Cell: 301-928-3463**

**Office: 301-681-0550 x 135**

**www.stanmoffson.com**





Foyer with mirrored closet doors



Living room with exit to balcony with stunning view



Dining room with mirrored wall



Lovely table space kitchen with pass through



Master bedroom



Master bath



Second full bath



Second bedroom



Fabulous view